

Still

CHASING CLIFFS

THE FIRST DECADE OF HARBOR MINISTRIES



HARBOR MINISTRIES

There is still a call.

An invitation to mystery, adventure, disruption.

A beckoning that can be heard only in the quiet.

From the beginning, Harbor Ministries has pursued that call...





**IT'S A PARADOX. MOVEMENT, RIPPLES,
IMPACT EMERGE OUT OF STILLNESS.**



Impact

Ten years in, Harbor Ministries is...

Still disrupting the leadership story.

Still fighting for SPACE.

Still chasing cliffs.

Still challenging high-capacity leaders to learn to live with rhythm, leave a legacy, and finish well.

And this is just the beginning...



THE DREAM

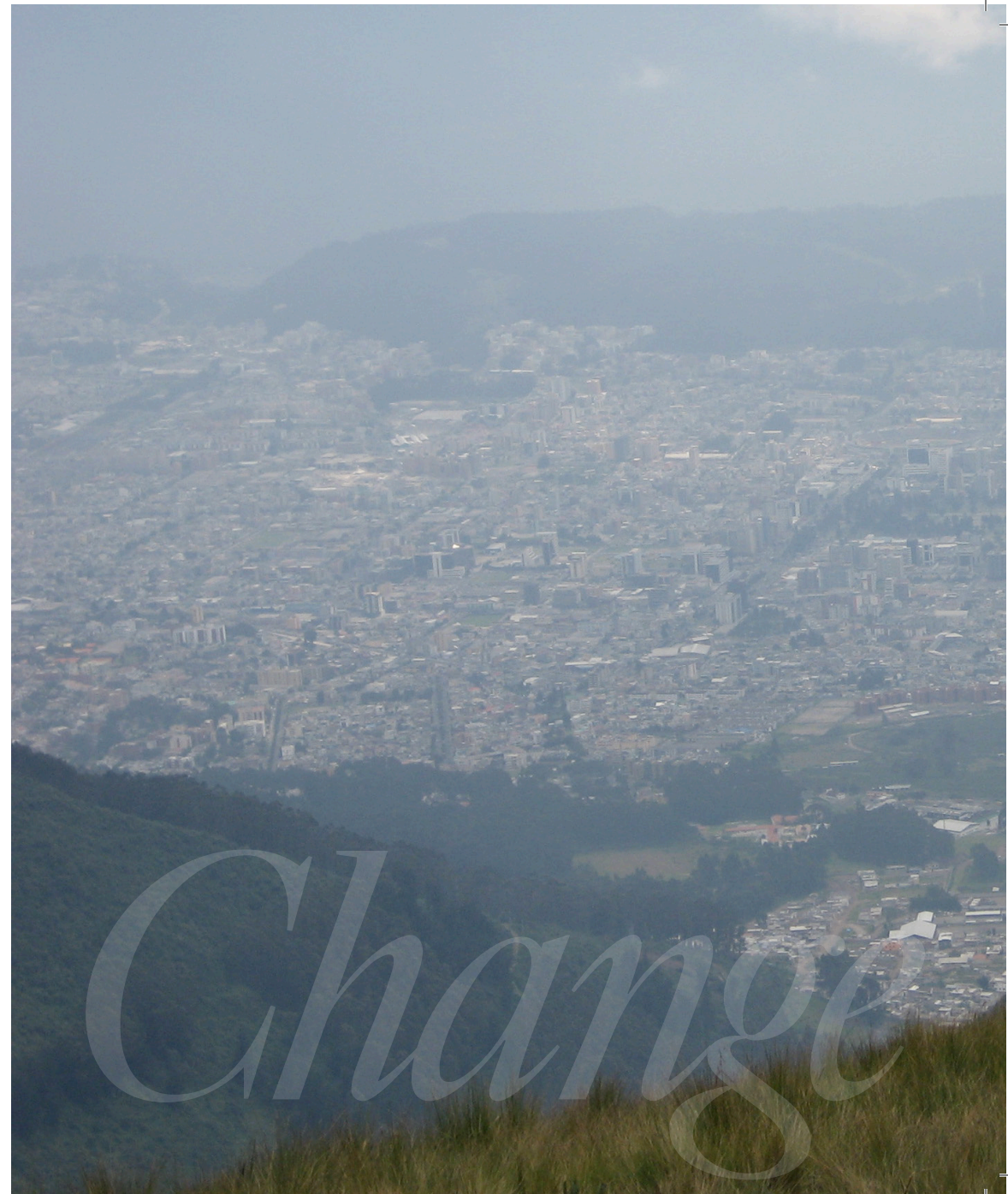
HARBOR FOUNDER TIM BOHLKE

It happened in a thin place—those places where the veil is pulled back and we experience a glimpse of God— on a mountain overlooking Quito, Ecuador.

I was at the bottom. I crashed into midlife hard. I was depressed and struggling. I wanted out of the race. I got some time away and climbed a mountain outside the city. As I sat overlooking Quito, God awoke a dream—a literal dream He had given me years earlier. A clear vision began to emerge, and God whispered to me in a clear, compelling way. A phrase kept going through my mind, a rhythm that others could not yet hear.

You can change the world by radically investing in a few

Tim, you can change the world, just twenty leaders at a time.





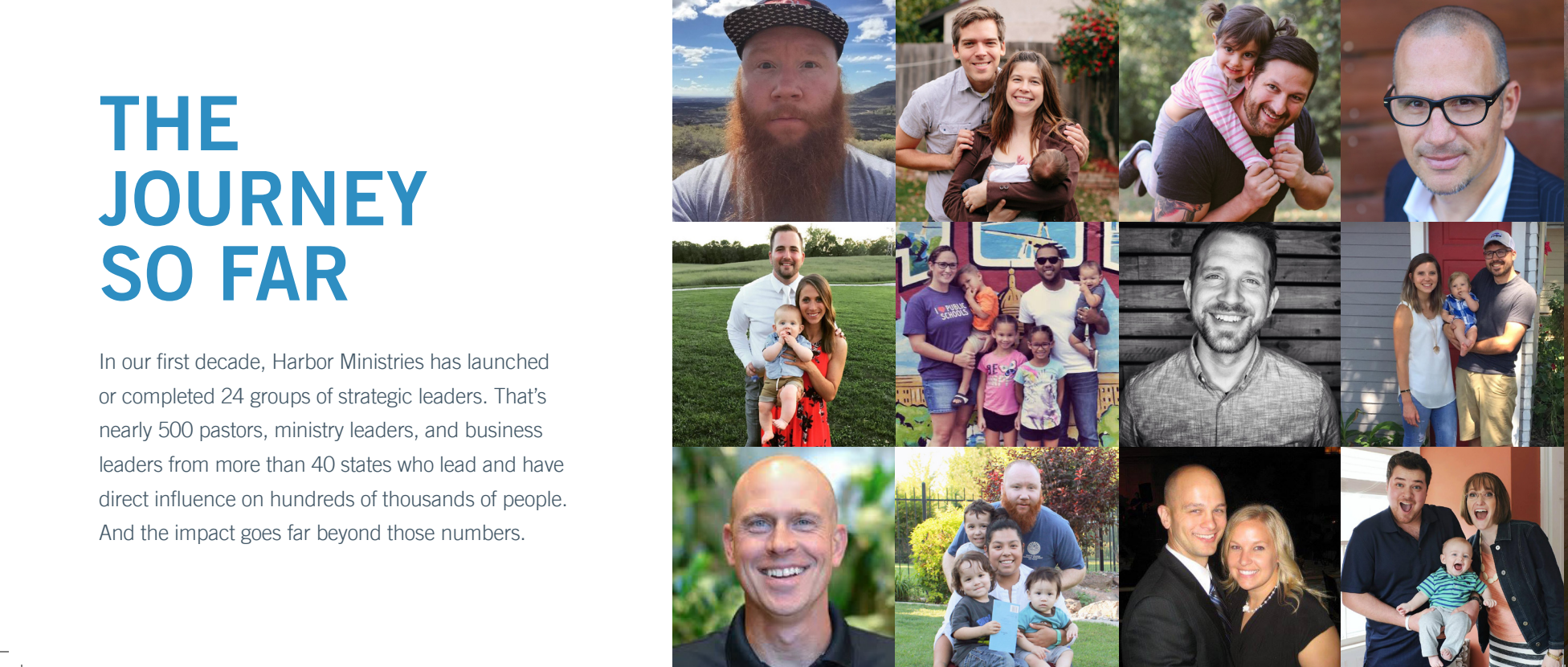
You need to invite people into something different, something intensely relational and deeply inspirational. You must remind leaders that no matter what life brings, no matter their successes or failures, they can know and experience God.

Then the vision became specific. This had to be something different. It needed to be a journey. Not a one-time shot, a flashy event, or a single inspirational moment. It must be a journey, a walk with God. Show leaders how to experience God for who He truly is—wild, mysterious, unpredictable. A fiercely loyal, relational God who invites us to challenge, disrupt and inspire.

Invite twenty leaders at a time into a three-year journey that could change the trajectory of their lives, their families, their businesses, and their ministries.

**It made no sense, but I knew I had to do it.
Or at least try...**





THE JOURNEY SO FAR

In our first decade, Harbor Ministries has launched or completed 24 groups of strategic leaders. That's nearly 500 pastors, ministry leaders, and business leaders from more than 40 states who lead and have direct influence on hundreds of thousands of people. And the impact goes far beyond those numbers.



RHYTHM IN TWENTY

"The coward never started.
The weak died along the way.
Only the strong arrived.
They were the pioneers."

-Unknown

THE PIONEERS: MAY 2009

Twenty guys from around the country took a chance. They didn't know each other. Most of them had no idea who or what Harbor Ministries was. But they knew their leadership journey had to change, and they were willing to take a risk.

RHYTHMinTWENTY is a three year, three-event journey for emerging leaders. Learn more at rhythmintwenty.com



Rhythm



"Looking back, I still shake my head. The very first guy who showed up at the very first Harbor event looked at me and said, 'My wife told me this was a cult and that I shouldn't come. I told her, 'I don't know who these people are, and this is something new, and I don't know really what this is about, but I'm so desperate to experience God that I have to go. I have to be reminded this is real. I need to encounter God. I can't go on as a pastor... I can't keep taking people to something I'm no longer able to experience myself. I have to go.'" — **Thin Places by Tim Bohlke**



"RHYTHMinTWENTY changed the trajectory of my life. As someone who is wired to go non-stop, I was headed towards a path of producing destructive activity but not God-honoring achievement.



"It was during my years with RHYTHM where I learned to sit quietly at the Father's feet, and as I did, He began nurturing a God-sized dream in my heart... My marriage, my parenting, and my mission are all in a healthy balance. I'm not confident I could say that without my time with RHYTHMinTWENTY!"

Adam Donyes, R20, Group 2

Founder and President, Link Year





SLOW AND STEADY

The groups are small—just 20 guys at a time. The pace is intentionally slow. We dare those who come to shut off the noise and listen. Leaders from around the country continued to apply to RHYTHMinTWENTY, and the deep impact of their experience still reverberates into the next generation.





"There is an entire forest growing from the one seed you planted in my heart three years ago. I have paid the message and vision of R20 forward so many times I've lost count. My family, so many of my leaders and friends have benefited from me leading differently."

Mike Tolerico, R20, Group 3

Groups Pastor



"This journey has been, without a doubt, the most transformational two years of my life... Two years ago I was just hanging on in life. I wasn't sure if I could make it; I wasn't sure if I could finish the race. I almost gave up..."

Tim Shelton, R20, Group 5

Financial Advisor

Lasting, world-impacting disruptions like these require something different than a program, a formula, or a process. They require leaders to still their heads and their hearts, and that requires...



Space

A man with short blonde hair, wearing a black hooded jacket and dark pants, is kneeling on a grassy cliffside. He is looking out over a vast, calm ocean under a hazy, overcast sky. The cliffside is covered in green grass and some small, dry-looking plants. The overall mood is contemplative and serene.


"We need so much more than just passion.

Going through the RHYTHM journey taught me how to bring this other piece of finding SPACE and connecting with God to the point that I really believe that I can sustain the calling that God has for me.

We want to make a difference but we realize that it happens with this long, steady, rooted intensity."

Daniel Jergensen, R20, Group 6

Pastor



SPACE is disruptive. When we strip away the noise, the expectations, the clock, when we slow our thoughts and allow ourselves to be still, we reconnect with our souls and with the One. We reconnect with his quiet voice and his powerful call.

The practice of SPACE is at the core of Harbor journeys. Those who embrace it change the trajectory of their lives, their families, their work, and the world.



Then we hear the stories.
We watch the ripples become waves.

We see the impact.
And we know—we know—we must press on.

A NEW HORIZON: MAY 2013

Harbor Ministries embarked on a new endeavor. ROGUE Journey is a place for more seasoned leaders who are not willing to coast or simply settle in. It is for those who believe the best years of impact and influence are in front of them. Leaders who are willing to step out of their comfort zone, and re-connect with a passionate pursuit of God, the kind of pursuit that made them dangerous in the first place.

ROGUE is a two-year, two-event journey for seasoned leaders.

Learn more at roguejourney.org

Journey



"What I found was not another conference where you felt you had to put up a front to cover your shortcomings, nor was it a place where the next popular church leader told you how church was supposed to be run. What I found were ROGUE leaders who were honest and real, who listened more than they spoke. What I found at ROGUE was the path and the permission to heal."

Blake Clarke, ROGUE Journey, Group 3

Church Planter



"As a result of ROGUE, I started fighting for space. I needed space to heal and process what God had been up to, to become a better leader, husband, and father, and once I got that, it allowed me to move forward."

Chris Brester, ROGUE Journey, Group 4

Business Owner





WORTH THE FIGHT

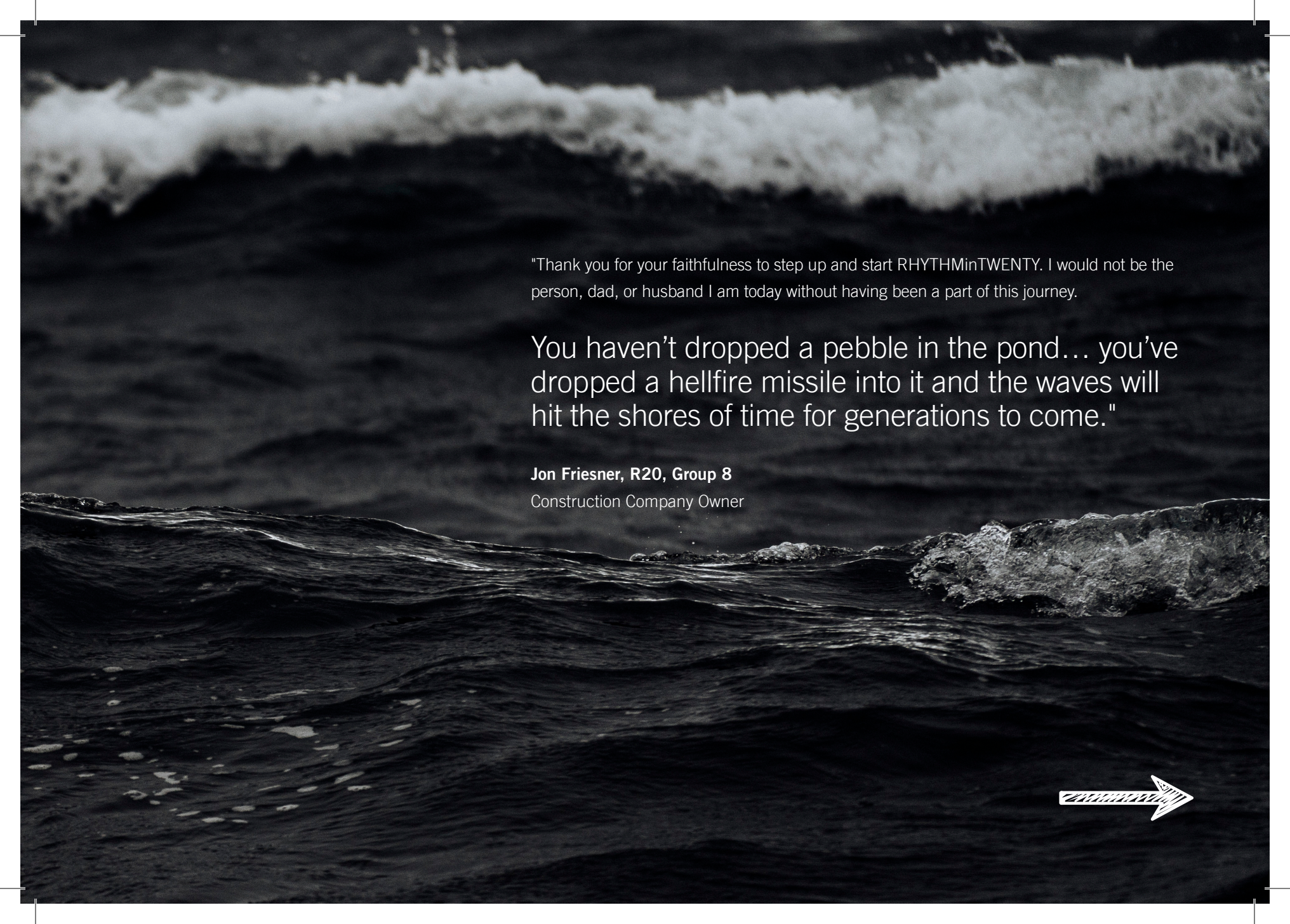
A decade in any pursuit can be wearing. When you are rowing against the current, disrupting leadership culture and cultivating long-term change rather than quick results, it's often tempting to abandon the journey...

Then we hear the stories.

We watch the ripples become waves.

We see the impact.

And we know—we know—we must press on.



"Thank you for your faithfulness to step up and start RHYTHMinTWENTY. I would not be the person, dad, or husband I am today without having been a part of this journey.

You haven't dropped a pebble in the pond... you've dropped a hellfire missile into it and the waves will hit the shores of time for generations to come."

Jon Friesner, R20, Group 8
Construction Company Owner



THE NEXT CLIFFS

IN THE NEXT THREE YEARS WE PLAN TO

- Launch 10 new groups.
- Establish a legacy funding source through the Blue Spruce.
- Radically invest in The Outpost, which will allow us to remain intentional and connected with RHYTHM and ROGUE alumni.
- Launch new initiatives including Rooted, a new two-event co-ed experience for young 20-something leaders, and a journey for women.





THE BLUE SPRUCE MANOR

ESTABLISH LEGACY FUNDING SOURCE

During our first decade, we've experienced countless profound moments at the Blue Spruce Manor near Estes Park, Colorado. Six years ago, we began dreaming of acquiring the Blue Spruce and establishing an anchor site for Harbor Ministries.

In December 2018, that dream came true. The Blue Spruce will be the hub of Harbor events and leadership development and will provide a source of income for decades to come.

YOU CAN HELP IN TWO WAYS:

Rent the Spruce.

Retreat to the heart of the Rocky Mountains to rest and recalibrate and know that your rental fee will help support Harbor. Visit harborspruce.com for pricing and available dates.

Help us own the Blue Spruce outright.

The purchase price of the Blue Spruce was \$1.75 million. Harbor paid \$950,000 upfront. Our goal is to pay off the remaining \$800,000 through an ambitious legacy giving campaign. Once we own the Blue Spruce debt-free, the rental income will go a long way in funding Harbor endeavors for years to come.



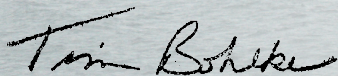


A LEGACY OF IMPACT

It would have been so much easier to settle in, stay back from the edge, and not risk it. But, early in the Harbor journey, I realized it was actually more dangerous to just coast and not take the risk, to not step out.

Now ten years in... some cliffs have been scaled, leadership journeys have been disrupted in the best ways, strategic leaders from over 40 states have fought for SPACE, and holy ground has been claimed. We have seen leaders who have learned to live with rhythm, leave a legacy, and finish well. We have seen these leaders having deep and lasting impact on families, churches, and many organizations all over the country. God is increasing the influence and footprint of Harbor, and this is possible because of you.

Your investment in Harbor Ministries over the past decade has been world-changing. Now we invite you to again chase some cliffs with us. Time is short, the mission is too critical to settle. JOIN us in the next years of our journey as we radically invest in strategic leaders.



SHARE IN THE JOURNEY

- Be a foundation-builder through monthly giving of \$25, \$50, \$150, or \$300.
- Sponsor a Leader with a one-time gift of \$5,000 or \$150 a month.
- Give a one-time gift of \$500, \$2,500, \$5,000, \$15,000, or \$25,000 to help retire the debt on the Blue Spruce in 2020.
- Help fund one of our new initiatives with a one-time gift by being a RADICAL investor with a three-year pledge of \$5,000, \$10,000, \$25,000, or \$50,000.

Give online at www.harborministries.com/donate

Or mail a pledge in the enclosed envelope to:

Harbor Ministries
P.O. Box 21984
Lincoln, NE 68516





HarborMinistries.com



HARBOR MINISTRIES